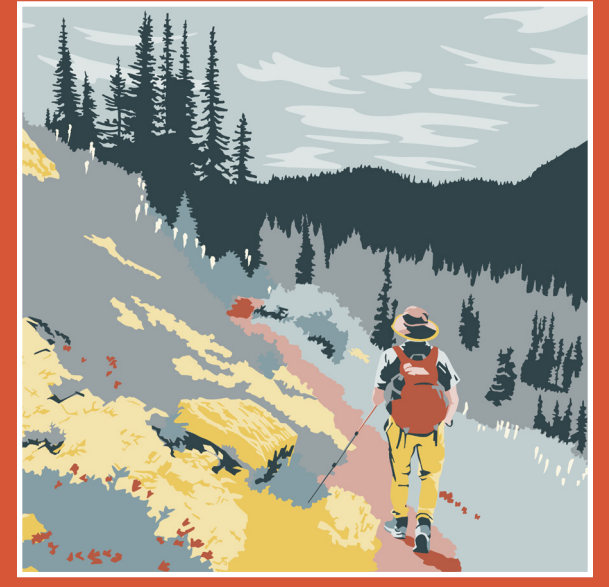




### A Great Place to Live and Visit

The Flathead Valley is an outdoor recreation destination worth exploring! The expansive landscape is home to a rich diversity of high-alpine, mature forest, and pristine river-bottom settings. The wide variety of hiking, biking, and horseback riding trails make the Flathead one of MT's best recreation destinations. The trails in the Jewel Basin and Bob Marshall Wilderness Complex are clear highlights and there are plenty of exciting trail systems managed by local community organizations easily accessed from our vibrant towns, too. Numerous local organizations, agencies, and businesses work together to ensure our Flathead Valley trails are high-quality and provide enjoyable recreation opportunities. Flathead Trails Association brings these community groups together to build capacity to manage and maintain existing trails and expand new sustainable trails to support recreation users and visitors today and into the future.



The Flathead Trails Association is a coordinated effort between local organizations. We work to preserve and advance trails and paths in the Flathead Valley. For detailed maps and trail ideas, visit [flatheadtrails.org/maps](http://flatheadtrails.org/maps)

### Leading Trail Partners



Flip to the back to see the entire network of FTA trail partners! Our steering committee works hard to chart a path for FTA's future and convenes meetings where all the trail organizations and agencies are invited.



#### Land Management Agencies

- ★ Partner Spotlight
- 🏠 Ranger Station
- 🚶 Trailhead
- 🏕 Campground
- 🚤 Boat Ramp
- 🎣 Fishing Access
- 🎿 Ski Hill
- 🌲 National Forest
- 🏔 National Park
- 🏠 State Lands
- 🐟 Fish & Wildlife
- 🏞 Tribal Lands

Check out the numbered stars on the back to learn more about where the FTA partners operate!

LEAVE-NO-TRACE HIKING, BIKING, SKIING, RIDING, CAMPING, BOATING, FISHING, AND PACKING HORSES WITH CERTIFIED WEED-FREE HAY ARE CRITICAL FOR MAINTAINING THE RESOURCES OF THE FLATHEAD FOR PRESENT AND FUTURE GENERATIONS TO ENJOY.

Here's a fun fact - the 49th parallel makes up the US Canadian border. The mountain range that crosses the 49th parallel in Montana is called the Whitefish Range and the Macdonald and Galton Ranges in British Columbia.

STILLWATER STATE FOREST

FLATHEAD NATIONAL FOREST

WHITEFISH RANGE

The Stillwater State Forest is 106,500 acres managed for timber. A conservation license is required for hunting, fishing, and recreation.

This is bear country, home to both black and grizzly bears. Remember to make noise, travel in groups, carry bear spray, secure food and garbage, and be aware of your surroundings.

The Blackfeet name for this region is "Mistakikis" meaning "backbone of the world."

GLACIER NATIONAL PARK

Together the North, South, and Middle Forks of the Flathead River drain approximately 4,464 sq mi. The waters flow from Columbia Falls to Flathead Lake and eventually drain into the Columbia River.

55 in of snow falls each year on average in the Flathead Valley with 300+ in falling in the surrounding mountains.

Built in 1953, the Hungry Horse Dam is 564ft high. Hungry Horse Reservoir is 53 miles long.

The Great Bear Wilderness is the northern portion of the Bob Marshall Wilderness and borders Glacier National Park. It forms a critical ecological link within the Crown of the Continent ecosystem.

Flathead Lake is a remnant of glacial Lake Missoula. Until the ice dam broke 15,000 years ago, the Lake Missoula covered much of Northwestern Montana.

The Salish name for Flathead Lake is Clqetk, meaning "Broad Water."

One of the highest peaks in the Swan Range, rising to 7,510ft, Mt. Aeneas is named for Chief Aeneas Paul, of the Dayton Creek band of the Kootenai (Ktunaxa) one of the signers of the Hell Gate Treaty of 1855.

The highest mountain peaks in the area are just over 10,000' in elevation; the elevation of the Flathead Valley is approximately 3,000'.

Comprised of more than 1.5 million acres, the Bob Marshall Wilderness Complex is the 3rd largest Wilderness area in the lower 48 states.

Northwest Montana has a rich history of native peoples who called this landscape home prior to the colonization of Europeans on the continent. They continue to live and thrive here. The Amskapi Piikani (the Blackfeet Nation of Montana), the Niitsitapi (the Blackfoot Confederacy), the Selk'it (Salish), Q'isp'e (Pend d'Oreille or Kalispel), and Ktunaxa (Kootenai) tribes are the original and longest serving stewards of the land. Indigenous people and nations are a vital part of Northwest Montana's past, present, and future.

Spotted Bear

**1 Backcountry Hunters & Anglers**

Backcountry Hunters & Anglers seeks to ensure North America's outdoor heritage of hunting and fishing in a natural setting, through education and work on behalf of wild public lands, waters, and wildlife.



[BACKCOUNTRYHUNTERS.ORG](http://BACKCOUNTRYHUNTERS.ORG)

**2 North Fork Trails Association**

Our mission is to promote the maintenance and preservation of the historic trail structure in the North Fork Flathead area with the aim of supporting recreation, forest management and research.



[NFTRAILS.ORG](http://NFTRAILS.ORG)

**3 Flathead Snowmobile Association**

The Flathead Snowmobile Association is a membership of snowmobilers and outdoor enthusiasts who endeavor to educate the public about the sport of snowmobiling, enhance the riding experience in our area, promote safety, and provide opportunities for family recreation.



[FLATHEADSNOWMOBILER.COM](http://FLATHEADSNOWMOBILER.COM)

**4 Flathead Rivers Alliance**

Our mission at Flathead Rivers Alliance is to support and enhance the outstanding and remarkable Three Forks of the Flathead River.



[FLATHEADRIVERS.ORG](http://FLATHEADRIVERS.ORG)



**5 Glacier Nordic Club**

Mission: To promote and inspire a life-long love of cross-country skiing.

Glacier Nordic grooms at five different locations, offers youth and adult season ski programs, lessons, and rentals.



[GLACIERNORDICCLUB.ORG](http://GLACIERNORDICCLUB.ORG)

**6 Glacier Institute**

Strengthening connections to the natural world through guided hikes and education programs in Glacier National Park.



[GLACIERINSTITUTE.ORG](http://GLACIERINSTITUTE.ORG)

**7 Glacier Conservancy**

The Glacier National Park Conservancy works to preserve and protect Glacier National Park for future generations.



[GLACIER.ORG](http://GLACIER.ORG)

**8 Dream Adaptive Recreation**

Our mission is to enhance the lives of individuals with disabilities by providing year-round outdoor adaptive recreational opportunities.



[DREAMADAPTIVE.ORG](http://DREAMADAPTIVE.ORG)

**9 Flathead Area Mountain Bikers**

The Flathead Area Mountain Bikers preserve & advance mountain biking in the Flathead through trail building/maintenance, multi-use trail advocacy, and community mountain bike skills clinics.



[FLATHEADAMB.ORG](http://FLATHEADAMB.ORG)

**10 Whitefish Legacy Partners**

Whitefish Legacy Partners is a non-profit organization whose community-minded vision ensures conservation, recreation and education on the lands around Whitefish for future generations. The Whitefish Trail is their cornerstone recreation project.



[WHITEFISHLEGACY.ORG](http://WHITEFISHLEGACY.ORG)

**11 Gateway to Glacier Trails**

We develop and maintain a network of trails within the Greater Glacier Ecosystem to foster stewardship and connect communities to our open spaces.



[GATEWAYTOGLACIERTRAIL.COM](http://GATEWAYTOGLACIERTRAIL.COM)

**12 Columbia Falls Rotary**

We provide service to others, promote integrity, and advance world understanding, goodwill, and peace through our fellowship of business, professional, and community leaders.



[CLUB@COLUMBIAFALLSROTARY.COM](mailto:CLUB@COLUMBIAFALLSROTARY.COM)

**13 Montana Native Plant Society**

The goals of the Montana Native Plant Society are to preserve, conserve, and study the native plants and plant communities of Montana, and to educate the public about the values of our native flora.



[MTNATIVEPLANTS.ORG](http://MTNATIVEPLANTS.ORG)

**14 Friends of Flathead Avalanche Center**

Our mission is to save lives by providing quality education and supporting the Avalanche Center's seven-day-a-week avalanche forecasts for our community.



[FLATHEADAVALANCHE.ORG](http://FLATHEADAVALANCHE.ORG)

**15 Northwest Montana Forest Fire Lookout Association**

The Northwest Montana Lookout Association, Inc. is a 501(c)3 nonprofit organization dedicated to supporting Federal and State agencies in the restoration and maintenance of fire lookouts and other support structures on public land.



[NWMT-FFLA.ORG](http://NWMT-FFLA.ORG)

**16 Bob Marshall Wilderness Foundation**

BMWf connects people with America's wilderness heritage by providing access to and stewardship of one of the world's most spectacular places - Montana's Bob Marshall Wilderness Complex.



[BMWF.ORG](http://BMWF.ORG)

**17 Rails to Trails of Northwest Montana**

The mission of Rails to Trails of Northwest Montana is to expand and maintain the Great Northern Trail and to connect Glacier Park to Flathead Lake with a bike trail.



[RAILSTOTRAILSOFNWMT.COM](http://RAILSTOTRAILSOFNWMT.COM)

**18 Foys to Blacktail Trails**

Our mission is to enhance and steward a multi-use, community-focused trail system and advocate for access and trail connectivity between Blacktail Mountain, Herron Park, and the greater Flathead Valley.



[FOYSTOBLACKTAILTRAILS.ORG](http://FOYSTOBLACKTAILTRAILS.ORG)

**19 Montana Conservation Corps**

Inspiring young people through hands-on conservation service to be leaders, stewards of the land, and engaged citizens who improve their communities.



[MTCORPS.ORG](http://MTCORPS.ORG)

**20 Wild Montana**

Uniting and mobilizing communities to keep Montana wild.

We envision a Montana where people and wildlife flourish because public lands and waters are wild and connected.



[WILDMONTANA.ORG](http://WILDMONTANA.ORG)

**21 Citizens for a Better Flathead**

The mission of Citizens for a Better Flathead is to foster citizen participation and champion sustainable solutions needed to keep the Flathead ecologically and economically healthy.



[FLATHEADCITIZENS.ORG](http://FLATHEADCITIZENS.ORG)

**22 Evergreen Community Partners**

We are a non-profit formed to improve safety and recreational opportunities in the Evergreen area.



[EVERGREENCOMMUNITYPARTNERS@GMAIL.COM](mailto:EVERGREENCOMMUNITYPARTNERS@GMAIL.COM)

**23 North Shore Nordic**

The North Shore Nordic Club is a federally recognized 501(c)3 nonprofit dedicated to providing quality groomed cross country skiing in the lower Flathead Valley.



[NORTHSHORENORDIC.ORG](http://NORTHSHORENORDIC.ORG)

**24 Flathead Land Trust**

Flathead Land Trust is dedicated to protecting northwest Montana's spectacular land and water legacy through community-based conservation.



[FLATHEADLANDTRUST.ORG](http://FLATHEADLANDTRUST.ORG)

**25 Flathead Audubon**

Our mission is to conserve birds, wildlife habitat, and ecosystem diversity. We promote awareness and appreciation of the natural world through educational activities and advocacy programs.



[FLATHEADAUDUBON.ORG](http://FLATHEADAUDUBON.ORG)

**26 Northwest Montana Back Country Horsemen**

Our vision is to ensure stock use continues on public lands and to expose the wonders of our wilderness and wild places to the generations through fun, inspiring and thought-provoking programs and partnerships; to encourage responsible horsemanship by teaching Leave No Trace principles in the backcountry.



[NWMTBCH.ORG](http://NWMTBCH.ORG)

**A BIG THANKS TO OUR BUSINESS SPONSORS**

Backslope Brewing  
Bias Brewing  
Dee-O-Gee Kalispell  
Hammer Nutrition  
Haskill Creek Farms  
Montana Access Project  
Montana Build  
Murdoch's Ranch and Home Supply  
Northwest Montana Association of Realtors  
Right On Trek  
Sacred Waters Brewing  
Spotted Bear Spirits  
Tailwaggers Pet Supply  
Whistling Andy Distillery  
Whitefish Mountain Resort

**WHERE CAN YOU GET MORE INFORMATION?**

**WHITEFISH CHAMBER OF COMMERCE & EXPLORE WHITEFISH**  
[WWW.WHITEFISHCHAMBER.ORG](http://WWW.WHITEFISHCHAMBER.ORG) & [EXPLOREWHITEFISH.COM](http://EXPLOREWHITEFISH.COM)  
**DISCOVER KALISPELL**  
[DISCOVERKALISPELL.COM](http://DISCOVERKALISPELL.COM)  
**BIGFORK CHAMBER OF COMMERCE**  
[BIGFORK.ORG](http://BIGFORK.ORG)  
**LAKESIDE-SOMERS CHAMBER OF COMMERCE**  
[LAKESIDESOMERSCHAMBER.ORG](http://LAKESIDESOMERSCHAMBER.ORG)  
**COLUMBIA FALLS CHAMBER OF COMMERCE**  
[COLUMBIAFALLSCHAMBER.ORG](http://COLUMBIAFALLSCHAMBER.ORG)  
**EVERGREEN CHAMBER OF COMMERCE**  
[EVERGREENCHAMBEROF.COMMERCE.WILDAPRICOT.ORG](http://EVERGREENCHAMBEROF.COMMERCE.WILDAPRICOT.ORG)

The Flathead Trails Association (FTA) works to preserve and advance trails and paths in the Flathead Valley. FTA is comprised of community organizations partnering to host events, provide user information, and share resources.